

RURALQUIP STEEL BOOKLET



Table of Contents

	<u>Page number</u>
FLAT MILD STEEL	4-5
RHS	6-11
ANGLE	12
CHANNEL	13
UNIVERSAL BEAMS	14
UNIVERSAL COLUMNS	15
TAPER FLANGE BEAMS	15
SOLID ROUND	16-17
SOLID SQUARE	18
PLATE / SHEETING	19
PIPES	20-21
FLANGES	22
BENDS	22
GASKETS	22
TEE'S	23
REDUCERS	23
PIPE FITTINGS BOLT ON	24
EXPANDED MESH	25
PERFORATED PLATE	25
HOLLOW BAR	26-27
STANCHIONS / HANDRAILS	28
GRATING	29
VIDAPLATE	30
BISALLOY	31
REINFORCING	32-33
GATES AND HINGES	34
WELD MESH / BIN MESH	35
STARPICKET	35
FENCE WIRE	36

Table of contents

	<u>Page number</u>
FENCE PANELS	37
POOL PANELS	37
COLORBOND FENCING	38-40
CARPORT KITS	41
CUSTOM ORB IRON	42
TRIMDEK IRON	42
PURLINS	42
TOPHAT	42
DOOR TRACKS	43
ALUMINIUM	44-46
STAINLESS	47-51
SERVICES	52

RHS - PACK BUY AT COMPETITIVE PRICES.

PIPE - SLING BUY AT COMPETITIVE PRICES.

ORDER IN ITEMS:

LET US KNOW YOUR STEEL REQUIREMENTS.

WE USE OUR BUYING POWER

TO GET THE BEST DEAL FOR YOU.

**RURALQUIP RECEIVES DELIVERIES DAILY
(MONDAY - FRIDAY)**

WE OFFER EXCELLENT SERVICE .

PHONE ORDERS WELCOME.

**Ruralquip will not be responsible for wrong
information published in this booklet.**

Flat Mild Steel

<u>3mm</u>	<u>5mm</u>	<u>6mm</u>	<u>8mm</u>
20x3	20x5 *	20x6	**
25x3	25x5	25x6	25x8
32x3	32x5	32x6	32x8
40x3	40x5	40x6	40x8
50x3	50x5	50x6	50x8
65x3	65x5	65x6	65x8
	75x5	75x6	75x8
		90x6	90x8
	100x5	100x6	100x8
	**	110x6 *	110x8 *
	130x5	130x6	130x8
	150x5	150x6	150x8
		180x6	180x8
		200x6	200x8 *
		250x6	250x8
		300x6	300x8

***To be ordered in items**

****Not available at all times**



Flat Mild Steel

<u>10mm</u>	<u>12mm</u>	<u>16mm</u>	<u>20mm</u>	<u>25mm</u>
20x10	**	**	**	**
25x10	25x12	**	**	**
32x10	32x12	**	**	**
40x10	40x12	40x16	**	**
50x10	50x12	50x16	50x20	50x25
65x10	65x12	65x16	65x20	**
75x10	75x12	75x16	75x20	75x25
90x10	90x12	**	**	**
100x10	100x12	100x16	100x20	100x25
110x10	110x12 *	**	**	**
130x10	130x12	130x16	130x20	130x25
150x10	150x12	150x16	150x20	150x25
180x10	180x12	180x16	180x20	180x25
200x10	200x12	200x16	200x20	200x25
250x10	250x12	250x16	250x20	250x25
300x10	300x12	300x16	300x20	300x25

Spring steel:

40x6mm 6000mm stocked at Ruralquip

*** To be ordered in items**

**** Not available at all times**

RHS/Box Section

6500mm lengths

<u>Size</u>	<u>Thick</u>	<u>Painted</u>	<u>All Gal</u>
13x13	1.6mm	✓	**
16x16	1.6mm	✓	**
20x20	1.6mm	✓	✓
20x20	2mm	✓	
25x25	1.6mm	✓	✓
25x25	2mm	✓	✓
25x25	2.5mm	✓	✓
25x25	3mm	✓	✓

8000mm lengths

30x30	1.6mm	✓	✓
30x30	2mm	✓	✓
30x30	2.5mm	✓	✓
30x30	3mm	✓	✓
35x35	1.6mm	✓	✓
35x35	2mm	✓	✓
35x35	2.5mm	✓	✓
35x35	3mm	✓	✓
40x40	1.6mm	✓	✓
40x40	2mm	✓	✓
40x40	2.5mm	✓	✓
40x40	3mm	✓	✓
40x40	4mm	✓	✓

**Galvanised and Plastic caps
available in some sizes.**

**We also cut to size:
Straight and angle cuts**



RHS/Box Section

8000mm lengths

<u>Size</u>	<u>Thick</u>	<u>Painted</u>	<u>All Gal</u>
50x50	1.6mm	*	✓
50x50	2mm	✓	✓
50x50	2.5mm	✓	✓
50x50	3mm	✓	✓
50x50	4mm	✓	✓
50x50	5mm	✓	✓
50x50	6mm	✓	
65x65	2mm	✓	✓
65x65	2.5mm	✓	✓
65x65	3mm	✓	✓
65x65	4mm	✓	✓
65x65	5mm	✓	✓
65x65	6mm	✓	
75x75	2.5mm	✓	✓
75x75	3mm	✓	✓
75x75	4mm	✓	✓
75x75	5mm	✓	✓
75x75	6mm	✓	
89x89	3.5mm	✓	✓
89x89	5mm	✓	✓
89x89	6mm	✓	

✓In stock items

*To be ordered in items

**Not available at all times

RHS/Box Section

8000mm lengths/ Some sizes 9m, 10m,12m lengths

<u>Size</u>	<u>Thick</u>	<u>Painted</u>	<u>All Gal</u>
100x100	3mm	✓	✓
100x100	4mm	✓	✓
100x100	5mm	✓	✓
100x100	6mm	✓	
100x100	9mm	✓	
125x125	4mm	✓	✓
125x125	5mm	✓	✓
125x125	6mm	✓	
125x125	9mm	✓	
150x150	5mm	*	
150x150	6mm	✓	
150x150	9mm	✓	
200x200	5mm	*	
200x200	6mm	*	
200x200	9mm	*	
250x250	6mm	*	
250x250	9mm	*	
300x300	6mm	*	
300x300	9mm	*	

12200mm lengths

178x178	9.5mm	✓
---------	-------	---

RHS/Box Section

8000mm lengths

<u>Size</u>	<u>Thick</u>	<u>Painted</u>	<u>All Gal</u>
50x25	1.6mm	✓	✓
50x25	2mm	✓	✓
50x25	2.5mm	✓	✓
50x25	3mm	✓	✓
65x35	2mm	✓	✓
65x35	2.5mm	✓	✓
65x35	3mm	✓	✓
65x35	4mm	✓	*
75x25	1.6mm	*	*
75x25	2mm	*	*
75x25	2.5mm	*	✓
75x50	2mm	✓	✓
75x50	2.5mm	✓	✓
75x50	3mm	✓	✓
75x50	4mm	✓	✓
75x50	5mm	✓	*
75x50	6mm	✓	
100x50	2mm	*	*
100x50	2.5mm	✓	✓
100x50	3mm	✓	✓
100x50	4mm	✓	✓
100x50	5mm	✓	✓
100x50	6mm	✓	

RHS/Box Section

8000mm lengths / Some sizes 12 metres

<u>Size</u>	<u>Thick</u>	<u>Painted</u>	<u>All Gal</u>
125x75	2mm	*	*
125x75	2.5mm	*	*
125x75	3mm	✓	✓
125x75	4mm	✓	✓
125x75	5mm	✓	✓
125x75	6mm	✓	
150x50	2mm	*	*
150x50	2.5mm	*	*
150x50	3mm	✓	✓
150x50	4mm	*	*
150x50	5mm	✓	✓
150x50	6mm	*	
150x100	4mm	✓	✓
150x100	5mm	✓	✓
150x100	6mm	✓	
150x100	9mm	✓	
200x100	4mm	✓	✓
200x100	5mm	*	
200x100	6mm	✓	
200x100	9mm	✓	

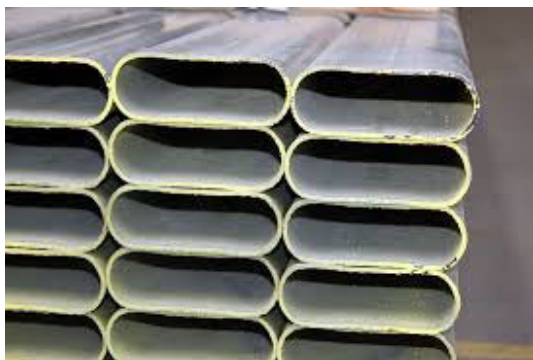
Packs could be ordered in at competitive prices.

RHS/Box Section

Imperial Rhs 8000mm lengths

<u>Size</u>	<u>Thick</u>	<u>Painted</u>	<u>All Gal</u>
102x76	3.5mm	✓	
102x76	5mm	✓	
102x76	6mm	✓	
152x76	3.5mm	*	
152x76	5mm	✓	
152x76	6mm	*	

Cattlerail 115x42x2mm in stock 6100mm



✓In stock items

***To be ordered in items**

****Not available at all times**

Angle Iron

6000 /7500/9000/12000mm lengths

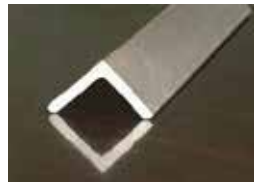
	3	5	6	8	10	12	16	19
19x19	✓							
25x25	✓	✓	✓					
30x30	✓	✓	✓					
40x40	✓	✓	✓					
50x50	✓	✓	✓	✓				
65x65		✓	✓	✓	✓			
75x50		✓	✓	✓				
75x75		✓	✓	✓	✓			
90x90			*	*	*			
100x75			✓	✓	✓			
100x100			✓	✓	✓	✓		
125x75			✓	✓	✓	*		
125x125				*	*	*	*	
150x90				*	*	*	*	
150x100					*	*		
150x150					*	*	*	*

200x200 angle available in 13 /16 /18 /20 /26mm thickness

Need to confirm availability at time of request

✓In stock items

*To be ordered in items



We also cut to size:

Straight and angle cuts

Channel Black

9000 lengths in stock

<u>Size</u>	<u>Flange (mm)</u>	<u>Web (mm)</u>	<u>Kg /m</u>	
75x40	6.1	3.8	5.92	✓
100x50	6.7	4.2	8.33	✓
125x65	7.5	4.7	11.9	✓
150x75	9.5	6.0	17.7	✓
180x75	11.0	6.0	20.9	✓
200x75	12.0	6.0	22.9	✓
230x75	12.0	6.5	25.1	*
250x90	15.0	8.0	35.5	✓
300x90	16.0	8.0	40.1	✓
380x100	17.5	10.0	55.2	*

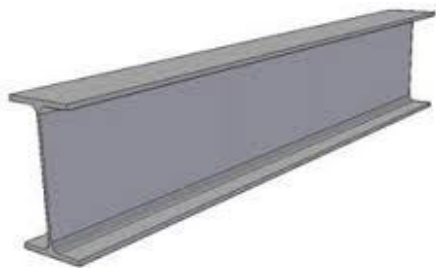
- ✓ In stock items
* Order in items

Other lengths could be 10.5m , 12m ,13.5m ,15m , 16.5m
and 18m lengths



Universal Beams

<u>Size</u>	<u>Kg/m</u>	<u>Web</u>	<u>Flange</u>	<u>Flange mm</u>	<u>Web mm</u>
150UB	14kg	150mm	75mm	7mm	5mm
	18kg	155mm	75mm	9.5mm	6mm
180UB	16.1kg	173mm	90mm	7mm	4.5mm
	18.1kg	175mm	90mm	8mm	5mm
	22.2kg	179mm	90mm	10mm	6mm
200UB	18.2kg	198mm	99mm	7mm	4.5mm
	22.3kg	202mm	133mm	7mm	5mm
	25.4kg	203mm	133mm	7.8mm	5.8mm
	29.8kg	207mm	134mm	9.6mm	6.3mm
250UB	25.7kg	248mm	124mm	8mm	5mm
	31.4kg	252mm	146mm	8.6mm	6.1mm
	37.3kg	256mm	146mm	10.9mm	6.4mm
310UB	32kg	298mm	149mm	8mm	5.5mm
	40.4kg	304mm	165mm	10.2mm	6.1mm
	16.2kg	307mm	166mm	11.8mm	6.7mm
360UB	44.7kg	352mm	171mm	9.7mm	6.9mm
	50.7kg	356mm	171mm	11.5mm	7.3mm
	56.7kg	359mm	172mm	13mm	8mm
410UB	53.7kg	403mm	178mm	10.9mm	7.6mm
	59.7kg	406mm	178mm	12.8mm	7.8mm
460UB	67.1kg	454mm	190mm	12.7mm	8.5mm
	74.6kg	457mm	190mm	14.5mm	9.1mm
	82.1kg	460mm	191mm	16mm	9.9mm
530UB	82kg	528mm	209mm	13.2mm	9.6mm
	92.4kg	533mm	209mm	15.6mm	10.2mm
610UB	101kg	602mm	228mm	14.8mm	10.6mm
	113kg	607mm	228mm	17.3mm	11.2mm
	125kg	612mm	229mm	19.6mm	11.9mm



Lengths:
 9 metre
 10.5 metre
 12 metre
 13.5 metre
 15 metre
 16.5 metre
 18 metre

Order in item.

Lengths could be cut to size.

Angle cuts for erecting a shed could be arrange.

Universal Columns

	<u>Size</u>	<u>Kg/m</u>
100UC	97x99	14.8kg
150UC	152x152	23.4kg
	158x153	30kg
	162x154	37.2kg
200UC	203x203	46.2kg
	206x204	52.2kg
	210x205	59.5kg
250UC	254x254	72.9kg
	260x256	89.5kg
310UC	308x305	96.8kg
	315x307	118kg
	321x309	137kg
	327x311	158kg

Taper Flange Beams

<u>Size</u>	<u>Kg/m</u>
100x45	7.2kg
125x65	13.1kg

Universal Columns and Taper Flange Beams
 to be ordered in. Ex Suppliers +/- 2-3 days.

Round Solid

6000mm lengths

Metric Sizes

<u>Size</u>	<u>Mild Steel</u>	<u>Bright</u>	<u>4140</u>
6mm	✓		
8mm	✓		
10mm	✓		
12mm	✓		
14mm			✓
16mm	✓		
20mm	✓	✓	✓
24mm	✓		
25mm		✓	✓
30mm		✓	✓
35mm		✓	
36mm		✓	
40mm		✓	✓
45mm		✓	
50mm		✓	✓
60mm		✓	
65mm		✓	
70mm		✓	
75mm		✓	
80mm		✓	

✓In stock items

Please call if you require a different size.

**We also cut to size. Call in your order
and collect at later**

6000mm lengths

Imperial Sizes

<u>Size</u>	<u>Bright</u>	<u>4140</u>
3/8	✓	
1/2	✓	✓
9/16	✓	
5/8	✓	✓
3/4	✓	✓
7/8	✓	
1 inch	✓	
1 1/8	✓	✓
1 1/4	✓	✓
1 3/8	✓	
1 7/16		✓
1 1/2	✓	✓
1 3/4	✓	✓
2 inch	✓	✓
2 1/4	✓	
2 1/2	✓	✓
3 inch	✓	
4 inch	✓	
5 inch	✓	
6 inch	✓	

✓**In stock items**

Please call if you require a different size.

**Making hinges— We got hollow bar
and pipes to suit your application.**

Square Solid

6000mm lengths

<u>Size</u>	<u>Mild Steel</u>	<u>Bright</u>	<u>1045 Black</u>	<u>K1045</u>
10mm	✓			
12mm	✓			
16mm	✓			
3/4		✓		
20mm	✓			
25mm	✓			
1 1/8				✓
1 1/4				✓
1 1/2				✓
40	✓			
50			✓	
63			✓	
75			✓	

✓In stock items

Please call if you require a different size.

We also cut to size.



Plate /Sheeting

In stock sizes

<u>Thick- ness</u>	<u>Size</u>	<u>Sign White</u>	<u>Zinc</u>	<u>Galv</u>	<u>Black</u>
.55mm	1.2x2.4	✓			
1mm	1.2x2.4		✓	✓	
1.2mm	1.2x2.4		✓	✓	
1.6mm	1.2x2.4		✓	✓	✓
2mm	1.2x2.4		✓	✓	✓
2.5mm	1.2x2.4			✓	✓
3mm	1.2x2.4			✓	✓
3mm	1.5x3.0				✓
4mm	1.5x3.0				✓
5mm	1.5x3.0				✓
6mm	1.5x3.0				✓
8mm	1.5x3.0				✓
10mm	1.5x3.0				✓
12mm	1.5x3.0				✓
16mm	1.5x3.0				✓

✓In stock items

Please call if you require a different size.

We also guillotine to size

Black floorplate/ Checkered profile:

In stock:1200x2400mm sheets in 2.1 & 3mm

Other thicknesses could be ordered in.

Pipe

<u>Nominal Size</u>	<u>Section</u>	<u>Outside mm</u>	<u>Wall thickness</u>	<u>Black</u>	<u>Galv</u>
15nb	Light	21.3mm	2mm	**	**
	Medium		2.6mm	✓	✓
	Heavy		3.2mm	**	**
	X -Strong		3.6mm	✓	**
20nb	X-Light	26.9mm	2mm		
	Light		2.3mm	*	*
	Medium		2.6mm	✓	✓
	Heavy		3.2mm	✓	**
	X-Heavy		4mm		
25nb	X-Light	33.7mm	2mm		
	Light		2.6mm	*	*
	Medium		3.2mm	✓	✓
	Heavy		4mm	✓	*
	X-Heavy		4.5mm		
32nb	X-Light	42.4mm	2mm		
	Light		2.6mm	*	*
	Medium		3.2mm	✓	✓
	Heavy		4mm	✓	*
	X-Heavy		4.5mm		
40nb	X-Light	48.3mm	2.3mm		✓
	Light		2.9mm	*	✓
	Medium		3.2mm	✓	✓
	Heavy		4mm	✓	*
	X-Heavy		5.4mm		
50nb	X-Light	60.3mm	2.3mm		
	Light		2.9mm	✓	✓
	Medium		3.6mm	✓	✓
	Heavy		4.5mm	✓	*
	X-Heavy		5.4mm		

Pipe

<u>Nominal Size</u>	<u>Section</u>	<u>Outside mm</u>	<u>Wall thickness</u>	<u>Black</u>	<u>Galv</u>
65nb	X-Light	76.1mm	2.3mm		
	Light		3.2mm	*	*
	Medium		3.6mm	✓	✓
	Heavy		4.5mm	✓	*
	X-Heavy		5.9mm		
80nb	X-Light	88.9mm	2.6mm		
	Light		3.2mm		
	Medium		4mm	✓	✓
	Heavy		5mm	✓	
	X-Heavy		5.9mm		
90nb	X-Light	101.6	2.6mm		
	Light		3.2mm		
	Medium		4mm	✓	✓
	Heavy		5mm		
100nb	X-Light	114.3mm	3.2mm		
	Light		3.6mm		
	Medium		4.5mm	✓	✓
	Heavy		5.4mm		
125nb	X-Light	139.7mm	3mm		
	Light		3.5mm		
	Medium		5mm	✓	✓
	Heavy		5.4mm		
150nb	X-Light	165.1mm	3mm		
	Light		3.5mm		
	Medium		5mm		✓
	Heavy		5.4mm		

✓ In stock items

* To be ordered in items

** Not available at all times



Pipe Fittings

<u>Size</u> <u>Nomi-</u> <u>nal</u> <u>Bore</u>	<u>Flange</u> <u>Table D</u>	<u>Black</u> <u>Gaskets</u>	<u>Blind</u> <u>Flange</u> <u>Table D</u>	<u>Elbow</u> <u>Long</u> <u>Radius</u> <u>90 Deg</u>	<u>Elbow</u> <u>Short</u> <u>Radius</u> <u>90 Deg</u>
3/4				✓	
1				✓	✓
1 1/4				✓	✓
1 1/2				✓	✓
2	✓	✓		✓	✓
3	✓	✓		✓	✓
4	✓	✓	✓	✓	✓
5	✓	✓	✓	✓	✓
6	✓	✓	✓	✓	✓
8	✓	✓	✓	✓	✓
10	✓	✓	✓	✓	
12	✓	✓	✓		

45 Degree elbows could be ordered in.

✓ In stock items



**Big Pipes:
In stock :
169 od– 400 od.
Other sizes could
be ordered.**



Tee's

<u>Size</u> <u>Nominal</u> <u>Bore</u>	<u>Equal Tee's</u>
3/4	✓
1	✓
1 1/4	✓
2	✓
3	✓
4	✓
5	✓
6	✓
8	✓
10	✓
12	

**Un-equal Tee's
could be ordered in.**
✓ In stock items



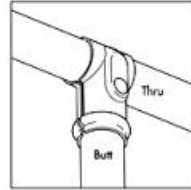
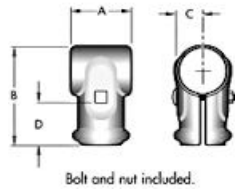
Concentric Reducers

<u>Size</u> <u>Nominal</u> <u>Bore</u>	<u>Concentric Reducer</u>
3/2	✓
5/3	✓
6/3	✓
6/4	✓
8/5	✓
10/6	✓
10/8	✓
12/6	✓
12/8	✓
12/10	✓

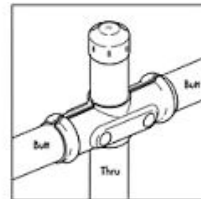
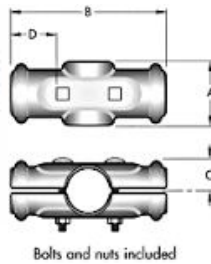
**Eccentric Reducers
could be ordered in.**



Bolt On Pipe Fittings



Galvanised Fixed T's



Galvanised Fixed Crosses

Galvanised Fixed Corners

Galvanised Adjustable Corners



Galvanised Post and Rail Clamps



**Speedee Sleeve
(joining pipes)**

Expanded Mesh

In stock:

Black & Galvanised (4514)

Nominal size of opening 96x32mm ,overall height 15mm.

Black & Galvanised (4519)

Nominal size of opening 96x32mm, overall height 21mm

Black & Galvanised (3022)

Nominal size of opening 53x15mm, overall height 13mm

Black (1220)

Nominal size of opening 22x9mm, overall height 4mm

Galvanised (1930)

Nominal size of opening 37x16mm, overall height 7.5mm

Galvanised (3830)

Nominal size of opening 62x28mm , overall height 7mm

They come in 600 , 750 , 900 and 1200mm x 3000mm sheets



Perforated Plate

In stock: 1200x2400 sheets

3.17mm hole , 1.6mm thick ,Black

3.17mm hole , 1.6mm thick ,Galvabond

4.76mm hole , 1.6mm thick ,Black

4.76mm hole , 1.6mm thick ,Galvabond

6.35mm hole , 1.6mm thick ,Black

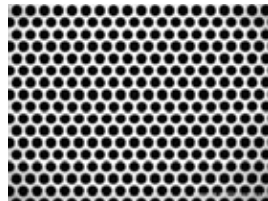
6.35mm hole , 1.6mm thick ,Galvabond

9.5mm hole , 1.6mm thick ,Black


9.5mm hole , 1.6mm thick ,Galvabond

12.7mm hole , 1.6mm thick ,Black

12.7mm hole , 1.6mm thick ,Galvabond



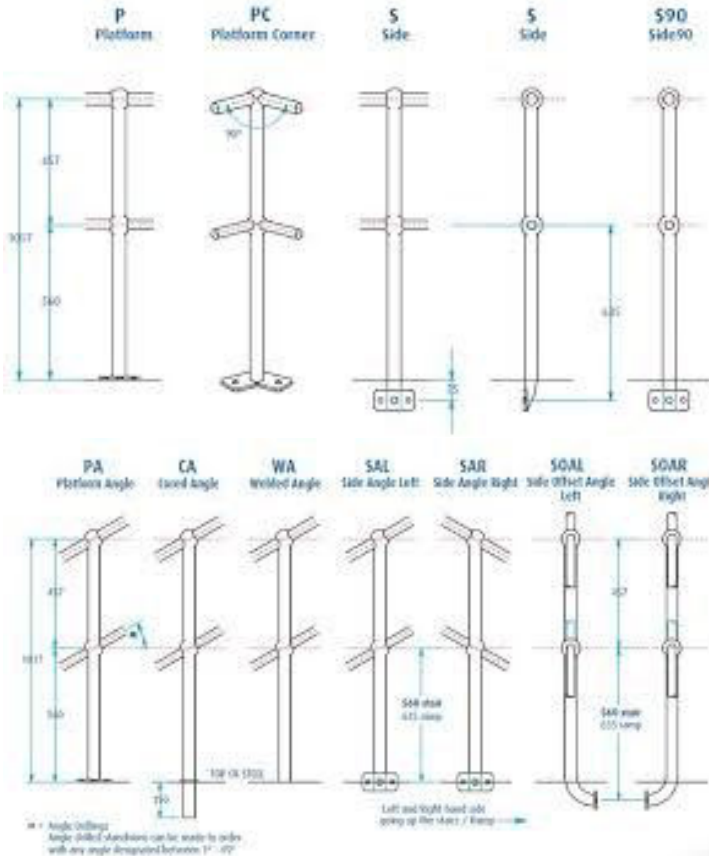
Hollow Bar

<u>Euro</u> <u>Norm</u> <u>Size</u>	<u>Approx</u> <u>Delivered</u> <u>Size</u>		<u>Euro</u> <u>Norm</u> <u>Size</u>	<u>Approx</u> <u>Delivered</u> <u>Size</u>	
30/15	31.8/12.2	✓	80/40	81.5/36.9	✓
30/20	31.8/17.6	✓	80/45	81.5/42.3	
35/20	36.5/17.1	✓	80/50	81.5/47.1	✓
35/25	36.5/22.5	✓	80/55	81.5/52.5	
40/20	41.3/16.7	✓	80/60	81.5/57.5	✓
40/25	41.3/22.1	✓	85/45	86.5/41.9	
40/30	41.3/27.5	✓	85/50	86.5/47.3	✓
45/25	46.3/19.9	✓	85/55	86.5/52.1	
45/30	46.3/27.1	✓	85/60	86.5/57.5	
45/35	46.3/32.5	✓	85/65	86.5/62.7	
50/25	51.2/22.7	✓	90/50	91.5/46.9	✓
50/30	51.3/26.7	✓	90/55	91.5/51.9	✓
50/35	51.3/32.1	✓	90/60	91.5/57.1	
50/40	51.3/37.5	✓	90/65	91.5/62.5	
55/30	57.1/26.1	✓	90/70	91.5/67.7	
55/35	57.1/31.9	✓	90/75	91.5/72.7	
55/40	57.1/37.1		95/50	96.5/46.7	
65/35	66.5/30.9	✓	95/55	96.5/51.9	
65/40	66.5/36.3	✓	95/65	96.5/62.1	
65/45	66.5/41.7	✓	95/70	96.5/67.5	
65/50	66.5/47.1	✓	95/75	96.5/72.7	✓
70/40	71.3/35.7	✓	100/55	101.6/51.8	
70/45	71.3/41.1		100/60	101.6/57	
70/50	71.3/46.7	✓	100/70	101.6/67.2	✓
70/55	71.3/52.1		100/75	101.6/72.6	✓
75/45	76.3/40.7	✓	100/80	101.6/77.8	
75/50	76.3/46.1				
75/55	76.3/51.7	✓			
75/60	76.3/57.1	✓			

Hollow Bar

<u>Euro</u> <u>Norm</u> <u>Size</u>	<u>Approx</u> <u>Delivered</u> <u>Size</u>		<u>Euro</u> <u>Norm</u> <u>Size</u>	<u>Approx</u> <u>Delivered</u> <u>Size</u>	
105/50	106.6/45.6		140/80	141.8/76	✓
105/55	106.5/51.4		140/90	141.8/86.4	✓
105/60	106.6/56.8	✓	140/100	141.8/97	
105/70	106.6/67.2	✓	140/105	141.8/102.2	
105/80	106.6/77.6	✓	140/115	141.8/112.4	
105/85	106.6/82.8	✓	150/75	151.8/69	
110/60	111.6/56.4		150/85	151.8/80.6	✓
110/70	111.6/67		150/95	151.8/91.2	
110/80	111.6/77.2		150/105	151.8/101.6	✓
110/85	111.6/82.4		150/120	151.8/117.2	
110/90	111.6/87.8		150/125	151.8/122.4	✓
120/65	121.7/62.2				
120/70	121.7/66.5		✓ In stock items		
120/80	121.7/77.1				
120/90	121.7/87.1				
120/95	121.7/92.5				
125/70	126.7/66.3		Other sizes could be ordered in - subject availability from suppliers		
125/80	126.7/76.7	✓			
125/90	126.7/87.3				
125/95	126.7/92.1				
125/100	126.7/97.5				
130/65	131.7/59		Please call us if you require bigger than 150mm outside diam hollow bar.		
130/75	131.7/71.1				
130/80	131.7/76.5				
130/90	131.7/86.9				
130/100	131.7/97.1		We cut to size		
130/105	131.7/102.5				

Stanchions



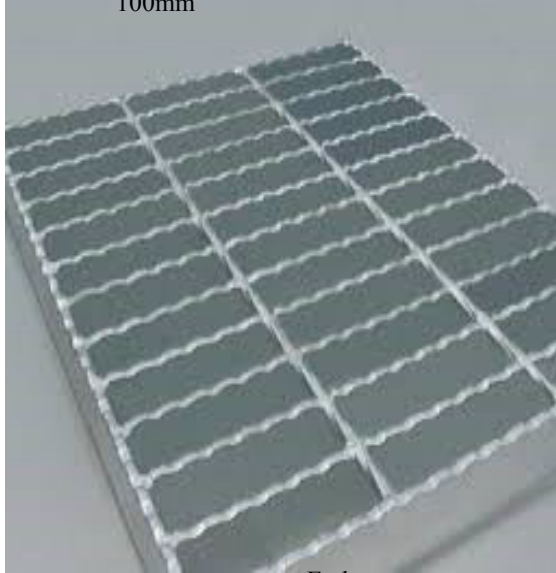
Stanchions to be ordered in.

Available in:

**Galvanised and
Aluminium**

Gratings

Crossbar
Choose
between
50mm or
100mm



Loadbar
Choose
Between
30mm
40mm

The
Loadbar
60mm only
available in
50mm
crossbar

Ends :
Banded or open

Thickness and width of steel:

Normally available in:

25x5mm / 32 x 3mm / 32 x 5mm / 40 x 3mm / 40 x 5mm /
50 x 5mm and 65 x 5mm.

Choose between
Galvanised or Black

Direction of grating:
Crossbar Length

Gratings gets fabricated to your specs.

There are large sheets available on request.

Vidaplate

Strips

<u>Width</u>	<u>6/6</u>	<u>9/10</u>
25mm	✓	✓
50mm	✓	✓
63mm	✓	✓
75mm	✓	✓
100mm	✓	✓

✓In stock items

Please call if you require a different size.

**Vidaplate sheets 1400x2900mm
could be ordered.**





In stock:

Grade 400/450: 5 , 6 , 10 , 12 , 16 and 25mm

Grade 80 : 6 , 16 and 40mm

We cut to size using oxy

Reinforcing



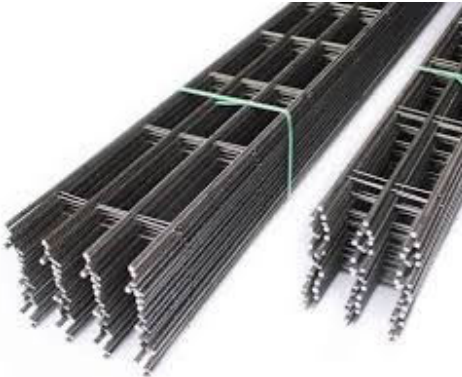
In stock: 2400x6000mm sheets

SL62 - 6mm wire , 200x200mm square size

SL72 - 7mm wire , 200x200mm square size

SL82 - 8mm wire , 200x200mm square size

RL1218 - 12mm wire, 200x100mm rectangle size



In stock: 6000mm lengths

L11TM3 - 3 Bar , 200mm wide , 11mm wire



In stock : visqueen black plastic and barchairs

Reinforcing



**We
bend
re-bar
at
Ruralquip**

In stock or do your application on request.



In stock :

Black 12mm x 6 metre
Galv 12mm x 6 metre
Black 16mm x 6 metre
Galv 16mm x 6 metre

We also cut to size



Corner bars

Ligatures



Droppers and
Starter bars

**We bend to suit your
application.**

Gates and hinges

Mesh Gates

In stock:

1200x2400mm

1200x3000mm

1200x3600mm

1200x4200mm



Banksia Gates

In stock:

1200x1000mm

1200x1600mm

Also got gate packs in stock



Other hinges and latches



Galvanised Weld Mesh

2400x3000mm sheets

25x25x2.5mm
 25x25x3.15mm
 50x25x3.15mm
 50x50x4mm
 75x50x4mm
 100x100x5mm



1200x2400mm sheets

25x25x2.5mm
 50x50x3.15mm
 75x50x4mm
 100x100x4mm

Starpicket

In stock: Stock post

Black 1650mm
 Galv 1650mm
 Black 1800mm
 Galv 1800mm
 Black 2400mm
 Galv 2400mm



and caps

Make your own gate:

We cut rhs , pipe and mesh

We got hinges

We got latches

Fencing wire



Hinge Joint



Farm Mesh



Chain Mesh



Barb Wire



Dog Mesh



Aviary Mesh



Chicken & Bird Netting



Fence Wire
1.57mm to 4mm

**Some items in stock.
Other items to be ordered in.**

Fencing panels

Garden panels



In stock:

Banksia panel

1200x3000mm

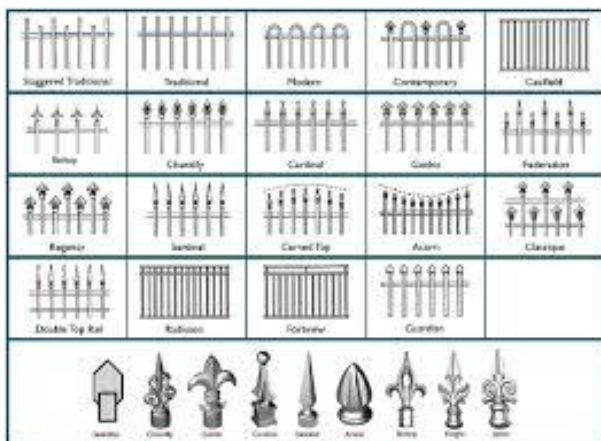
Different profile panels available to be ordered in.

Pool panels



To be ordered in.

Aluminium panels



To be ordered in. All panels available in Powder coat colours.

Colorbond Fencing



In stock:

- Rhs cut to size
- Galvanised caps to suit
- Rapidset
- Tophat/ Topspan 7500mm lengths

To be ordered in:

- Colorbond or Zinc Roofing iron
- 10x16 Roofscrews
- 2 Bend Colorbond flashing for top

Delivery to Ruralquip or to site

Colorbond Fencing

Infill sheet profiles

Neetascreen



Miniscreen



Smartascreen



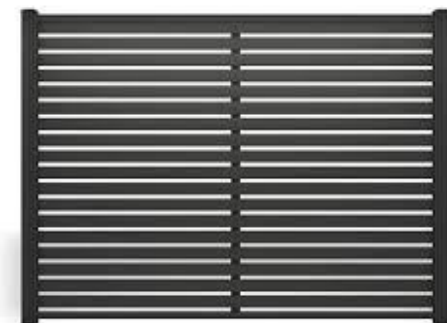
Colorbond Fencing

Infill sheet profiles

Spanscreen



Slatscreen



All available in colorbond colours.

Roofing

Order in items

- *Guttering and accessories
- *Ridge capping and Roll top ridging
- *Custom made flashings
- *Polycarbonate sheeting
- *Insulation , ceiling batts
- *Roof screws
- *Bridging
- *Purlin cleats
- *Purlin bolt and nuts
- *Angle connectors
- *General purpose brackets



Carport kits :

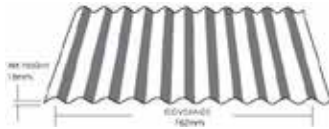
- *Single 6125 x 2850mm
- *Double 6125 x 5650mm

Available in a range of colorbond colours.

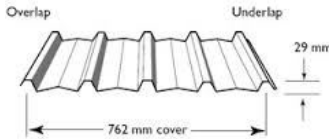
Please note:

Ruralquip supply only material.

Roofing



To be ordered.
Cut to size
Custom orb 762mm coverage



Trimdek 762mm coverage

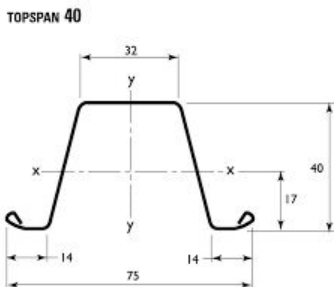
Zinc or Colorbond

Other profiles available on request.



In stock:
C10015 6 Metre
C10019 6 Metre
C15015 6 Metre
C15019 6 Metre
Z10015 6 Metre
Z10019 6 Metre

**We order in purlins cut to size.
They could be pre-punched.
Width 100mm up to 300mm.**

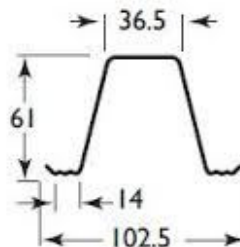


In stock:

**Topspan 40 .75mm
7500mm lengths**

In stock:

**Topspan 61 .75mm
7500mm lengths**



TOPSPAN 61
BMT
0.75, 1.00



Available for doors:

- **Up to 120 kg**
- **Up to 200 kg**
- **Up to 450 kg**
- **Up to 800 kg**

Aluminium

Flat

	<u>3mm</u>	<u>6mm</u>	<u>10mm</u>	<u>12mm</u>
20mm	✓			
25mm	✓	✓		
32mm	✓	✓	✓	
40mm	✓	✓	✓	
50mm	✓	✓	✓	✓
60mm	✓	✓	✓	
80mm		✓		

Angle

	<u>1.6mm</u>	<u>3mm</u>	<u>4mm</u>	<u>6mm</u>
20x20	✓	✓		
25x25	✓	✓		✓
32x32		✓		
40x40		✓		✓
50x25	✓	✓		
50x50		✓	✓	✓
60x60		✓		
76x50				✓
75x75		✓		
80x80				✓
100x50				✓
100x100				✓

Solid Round

10mm	✓
12mm	✓
16mm	✓
20mm	✓
25mm	✓
1 1/4 / 31.75mm	✓

Solid Square

20mm
25mm
40mm
✓ In stock items

Other items could be ordered in.

Aluminium

Rhs

	<u>1.6mm</u>	<u>3mm</u>	<u>4mm</u>
20x20		✓	
25x25	✓	✓	
32x32		✓	
40x40		✓	
50x25		✓	
50x50		✓	✓
65x65		✓	
75x50		✓	
75x75		✓	
80x40		✓	
100x50		✓	
100x100		✓	

Tube

	<u>1.6</u>	<u>3</u>	<u>3.25</u>	<u>3.95</u>	<u>4</u>	<u>4.47</u>	<u>4.75</u>	<u>6.35</u>
12mm	✓							
16mm	✓							
20mm	✓	✓						
25mm	✓	✓						
32mm		✓						
38mm			✓					
40mm		✓						
44mm			✓					
48mm						✓		
50mm	✓	✓						
60mm		✓						
63mm				✓				✓
76mm						✓		
100mm		✓						
152mm			✓					

Aluminium

Sheeting

	<u>Flat Plate</u>	<u>Checker</u>	<u>Propellor</u>
1.6mm	✓	✓	✓
2mm	✓	✓	
2.5mm	✓	✓	
3mm	✓	✓	
4mm	✓		
5mm		✓	
6mm	✓	✓	
10mm	✓		

✓ In stock items

Channel

Some sizes in stock



Planks

5m and 6m in stock.



Security Mesh

Expanded Mesh - to be ordered in.



Handrail

I - Beam



Delivery every Wednesday and Thursday.

**Call Ruralquip with your requirements.
Between 4 suppliers I should be able
to supply.**

Stainless

Flat Grade 316

	3mm	5mm	6mm
20mm	✓		
25mm	✓	✓	✓
30mm	✓	✓	✓
40mm	✓	✓	✓
50mm	✓	✓	✓
65mm		✓	✓
75mm		✓	✓
100mm		✓	✓

**8mm and thicker could be ordered in on request.
Suppliers lead time approx 2 days depending on
stock availability.**

Angle Grade 316

	3mm	5mm	6mm
20x20	✓		
25x25	✓	✓	
30x30	✓		
40x40	✓	✓	✓
50x50	✓	✓	✓
65x65			✓
75x75			✓

Other sizes could be ordered in.

Stainless

Solid Round Grade 316

Stocked Items :

1/4 , 5/16 , 3/8 , 1/2 , 5/8 , 3/4 , 7/8 , 1 , 1 1/4 , 1 1/2 , 2 inch
20mm and 25mm.

Rhs Grade 316

Stocked Items :

19x19x1.6mm , 25x25x1.6mm , 32x32x1.6mm , 38x38x1.6mm
50x25x1.6mm , 50x50x1.6mm .
50x25x3mm , 50x50x3mm , 80x40x3mm , 80x80x3mm ,
100x50x3mm , 100x100x3mm.

Other sizes could be ordered in.

Lead Time Approx 2 Days depending on stock availability.

Tube Grade 316

	<u>GRT 320</u> <u>1.2MM</u>	<u>GRT 320</u> <u>1.6MM</u>	<u>GRT 320</u> <u>3MM</u>	<u>Mirror</u>
9.53mm	✓			
12.7mm		✓		
15.88mm		✓		
19.05mm		✓		✓
22.23mm		✓		✓
25.4mm		✓		✓
31.75mm		✓		✓
38.1mm		✓		✓
44.45mm		✓		
50.8mm		✓	✓	

Pipe Grade 304

	<u>SCH 10</u>	<u>SCH 40</u>
80nb	✓	✓
100nb	✓	
150nb	✓	

Stainless

Pipe Grade 316

	<u>SCH 10</u>	<u>SCH 40</u>
15nb	✓	✓
20nb	✓	✓
25nb	✓	✓
32nb	✓	✓
40nb	✓	✓
50nb	✓	✓
65nb	✓	
80nb	✓	

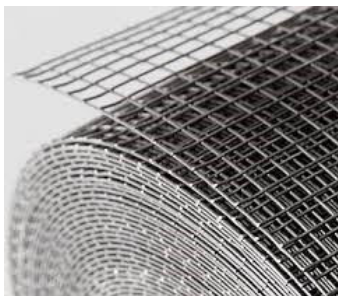
Plate Grade 304 and 316 **In stock 1200x2400mm sheets**

	<u>Grade 304</u>	<u>Grade 316</u>
1.2mm	✓	
1.6mm	✓	✓
2mm	✓	✓
3mm	✓	✓
4mm	✓	✓
6mm	✓	

Other sheet sizes could be ordered in on request.

✓ **In stock items**

Stainless

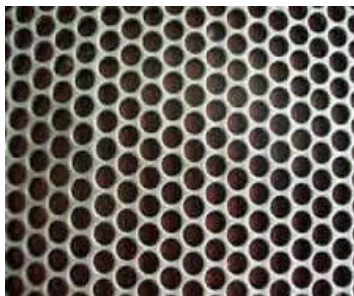


In stock:
Grade 304 cut from roll
11 app x 1.6mm x 1200mm

Grade 304
25x25x3.15mm
1200x2400mm sheet

Grade 316
25x25x3.15mm
1200x2400mm sheet

Grade 316
50x50x4mm
1200x2400mm sheet



Perforated Plate:
To be ordered in



Channel:
To be ordered in



304 Floor Plate
2.1 and 3mm Grade 304
to be ordered in.



Hollow Bar:
To be ordered in

Stainless



Flanges to be ordered in.



Reducers to be ordered in.



T's to be ordered in.



Sockets to be ordered in.



Elbows / Bends to be ordered in.



Toe nipples to be ordered in.

**EASY TO ORDER.
+ 2 DAYS LEAD TIME DEPENDING
ON STOCK AVAILABILITY.**



**Bandsaw cutting
including mitre**



**Guillotine
Up to 12mm thick**



Steel Press



Re-bar Bender



Punch Holes



**Deliveries + Hi -Ab
hire**